

THE POWER OF AI

HOW DOES AI AFFECT
BUSINESSES?

JOHN MOLSON MBA INTERNATIONAL CASE COMPETITION – CASE 3

2023

OUR TEAM

CORVINUS UNIVERSITY OF BUDAPEST
HUNGARY



BALÁZS BOGA
Public Policy
and Management



BORÓKA BRIGLOVICS
Management and
Leadership



HELÉNA MANJI
Management and
Leadership



JÓZSEF DÉKÁNY
Accounting

SUMMARY & STRUCTURE

01 ANALYSIS: HOW DOES AI
AFFECT DIFFERENT AREAS?

02 3X3 OPPORTUNITIES
3X3 CHALLENGES

03 ETHICAL AND ECONOMICAL
IMPLICATIONS OF GOVERNMENT

SUMMARY & STRUCTURE

01 ANALYSIS: HOW DOES AI
AFFECT DIFFERENT AREAS?

02 3X3 OPPORTUNITIES
3X3 CHALLENGES

03 ETHICAL AND ECONOMICAL
IMPLICATIONS OF GOVERNMENT

AI IS PRESENT AND CHANGED A LOT OF BUSINESS AREAS



The potential economic value creation of AI technologies in the next 20 years, based on McKinsey reports.

MANAGEMENT

MARKETING

OPERATIONS

RISK

0.5 \$ trn.

Suggestions

Finance and
IT

AI IS PRESENT AND CHANGED A LOT OF BUSINESS AREAS



The potential economic value creation of AI technologies in the next 20 years, based on McKinsey reports.

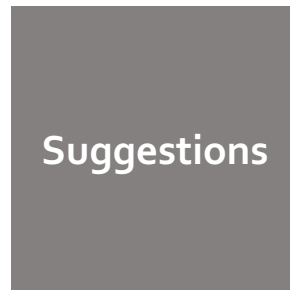
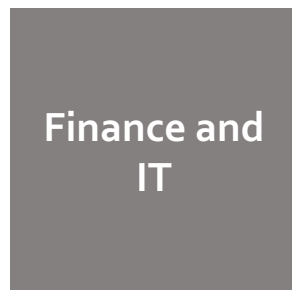
MANAGEMENT



MARKETING



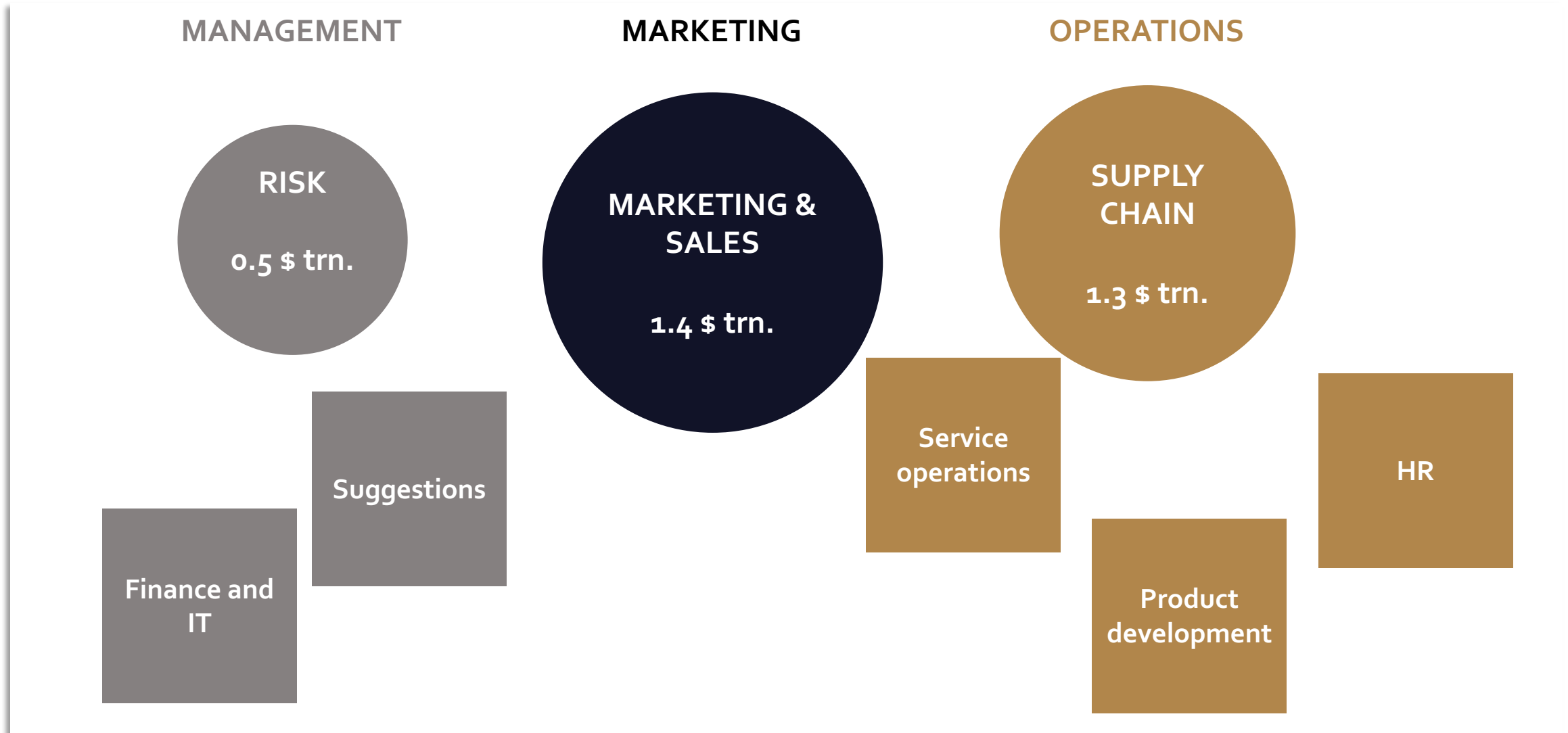
OPERATIONS



AI IS PRESENT AND CHANGED A LOT OF BUSINESS AREAS



The potential economic value creation of AI technologies in the next 20 years, based on McKinsey reports.



SUMMARY & STRUCTURE

01 ANALYSIS: HOW DOES AI
AFFECT DIFFERENT AREAS?

02 3X3 OPPORTUNITIES
3X3 CHALLENGES

03 ETHICAL AND ECONOMICAL
IMPLICATIONS OF GOVERNMENT

AI IN THE CASE OF THE CUSTOMERS



The following slide shows how does AI affect businesses regarding CUSTOMERS.

OPPORTUNITIES

CHALLENGES

AI IN THE CASE OF THE CUSTOMERS



The following slide shows how does AI affect businesses regarding CUSTOMERS.

OPPORTUNITIES

REACHING MORE CUSTOMERS

By using automated sales and marketing tools.

Illustration: WISE Meetings using AI for connection.

Address it: AI establishes potential connections.

CHALLENGES

AI IN THE CASE OF THE CUSTOMERS



The following slide shows how does AI affect businesses regarding CUSTOMERS.

OPPORTUNITIES

REACHING MORE CUSTOMERS

By using automated sales and marketing tools.

Illustration: WISE Meetings using AI for connection.

Address it: AI establishes potential connections.

REACHING THEM FASTER

By introducing chatbots.

Illustration: Wolt uses AI based chatbot.

Address it: invest in already existing solutions.

CHALLENGES

AI IN THE CASE OF THE CUSTOMERS



The following slide shows how does AI affect businesses regarding CUSTOMERS.

OPPORTUNITIES

REACHING MORE CUSTOMERS

By using automated sales and marketing tools.

Illustration: WISE Meetings using AI for connection.

Address it: AI establishes potential connections.

REACHING THEM FASTER

By introducing chatbots.

Illustration: Wolt uses AI based chatbot.

Address it: invest in already existing solutions.

REACHING THEM MORE PRECISELY

By understanding their needs with the help of algorithms.

Illustration: this chatbot understands the needs of the user.

Address it: upgrade robots with Machine Learning.

CHALLENGES

AI IN THE CASE OF THE CUSTOMERS



The following slide shows how does AI affect businesses regarding CUSTOMERS.

OPPORTUNITIES

REACHING MORE CUSTOMERS

By using automated sales and marketing tools.

Illustration: WISE Meetings using AI for connection.

Address it: AI establishes potential connections.

REACHING THEM FASTER

By introducing chatbots.

Illustration: Wolt uses AI based chatbot.

Address it: invest in already existing solutions.

REACHING THEM MORE PRECISELY

By understanding their needs with the help of algorithms.

Illustration: this chatbot understands the needs of the user.

Address it: upgrade robots with Machine Learning.

CHALLENGES

LOSING TOUCH

By replacing human connection with AI tools.

Illustration: chatbot answers the questions of Wolt users

Address it: offering other options for customers.

AI IN THE CASE OF THE CUSTOMERS



The following slide shows how does AI affect businesses regarding CUSTOMERS.

OPPORTUNITIES

REACHING MORE CUSTOMERS

By using automated sales and marketing tools.

Illustration: WISE Meetings using AI for connection.

Address it: AI establishes potential connections.

REACHING THEM FASTER

By introducing chatbots.

Illustration: Wolt uses AI based chatbot.

Address it: invest in already existing solutions.

REACHING THEM MORE PRECISELY

By understanding their needs with the help of algorithms.

Illustration: this chatbot understands the needs of the user.

Address it: upgrade robots with Machine Learning.

CHALLENGES

LOSING TOUCH

By replacing human connection with AI tools.

Illustration: chatbot answers the questions of Wolt users

Address it: offering other options for customers.

LOSING HUMAN RELATIONSHIP

Because of the lack of sentience of AI.

Illustration: it does not understand specific situations

Address it: invest in the development of AI.

AI IN THE CASE OF THE CUSTOMERS



The following slide shows how does AI affect businesses regarding CUSTOMERS.

OPPORTUNITIES

REACHING MORE CUSTOMERS

By using automated sales and marketing tools.

Illustration: WISE Meetings using AI for connection.

Address it: AI establishes potential connections.

REACHING THEM FASTER

By introducing chatbots.

Illustration: Wolt uses AI based chatbot.

Address it: invest in already existing solutions.

REACHING THEM MORE PRECISELY

By understanding their needs with the help of algorithms.

Illustration: this chatbot understands the needs of the user.

Address it: upgrade robots with Machine Learning.

CHALLENGES

LOSING TOUCH

By replacing human connection with AI tools.

Illustration: chatbot answers the questions of Wolt users

Address it: offering other options for customers.

LOSING HUMAN RELATIONSHIP

Because of the lack of sentience of AI.

Illustration: it does not understand specific situations

Address it: invest in the development of AI.

LOSING TRUST

This may lead customers to turn away from the business.

Illustration: users will specific problems will change.

Address it: leave customers with positive experience.

AI IN THE CASE OF THE EMPLOYEES



The following slide shows how does AI affect businesses regarding EMPLOYEES.

OPPORTUNITIES

CHALLENGES

AI IN THE CASE OF THE EMPLOYEES



The following slide shows how does AI affect businesses regarding EMPLOYEES.

OPPORTUNITIES

REDUCTION OF HUMAN ERROR

With robots, the number of errors can be decreased.

Illustration: Wolt's chatbot follows the same algorithm.

Address it: use learning algorithms.

CHALLENGES

AI IN THE CASE OF THE EMPLOYEES



The following slide shows how does AI affect businesses regarding EMPLOYEES.

OPPORTUNITIES

REDUCTION OF HUMAN ERROR

With robots, the number of errors can be decreased.

Illustration: Wolt's chatbot follows the same algorithm.

Address it: use learning algorithms.

REDUCTION OF REPETITIVE TASKS

By this employees can focus on creative tasks.

Illustration: accountants' monotonous tasks.

Address it: service centers must introduce AI.

CHALLENGES

AI IN THE CASE OF THE EMPLOYEES



The following slide shows how does AI affect businesses regarding EMPLOYEES.

OPPORTUNITIES

REDUCTION OF HUMAN ERROR

With robots, the number of errors can be decreased.

Illustration: Wolt's chatbot follows the same algorithm.

Address it: use learning algorithms.

REDUCTION OF REPETITIVE TASKS

By this employees can focus on creative tasks.

Illustration: accountants' monotonous tasks.

Address it: service centers must introduce AI.

REDUCTION OF RISK OF FRAUD

Recognition of suspicious action.

Illustration: fraud in case of financial issues.

Address it: invest in security.

CHALLENGES

AI IN THE CASE OF THE EMPLOYEES



The following slide shows how does AI affect businesses regarding EMPLOYEES.

OPPORTUNITIES

REDUCTION OF HUMAN ERROR

With robots, the number of errors can be decreased.

Illustration: Wolt's chatbot follows the same algorithm.

Address it: use learning algorithms.

REDUCTION OF REPETITIVE TASKS

By this employees can focus on creative tasks.

Illustration: accountants' monotonous tasks.

Address it: service centers must introduce AI.

REDUCTION OF RISK OF FRAUD

Recognition of suspicious action.

Illustration: fraud in case of financial issues.

Address it: invest in security.

CHALLENGES

LACK OF KNOWLEDGE

Employees are not well trained.

Illustration: AI is hard to introduce in the case of an SME.

Address it: train people to get familiar with IT.

AI IN THE CASE OF THE EMPLOYEES



The following slide shows how does AI affect businesses regarding EMPLOYEES.

OPPORTUNITIES

REDUCTION OF HUMAN ERROR

With robots, the number of errors can be decreased.

Illustration: Wolt's chatbot follows the same algorithm.

Address it: use learning algorithms.

REDUCTION OF REPETITIVE TASKS

By this employees can focus on creative tasks.

Illustration: accountants' monotonous tasks.

Address it: service centers must introduce AI.

REDUCTION OF RISK OF FRAUD

Recognition of suspicious action.

Illustration: fraud in case of financial issues.

Address it: invest in security.

CHALLENGES

LACK OF KNOWLEDGE

Employees are not well trained.

Illustration: AI is hard to introduce in the case of an SME.

Address it: train people to get familiar with IT.

FEAR OF BEING UNNECESSARY

Employees fear that their job will become unnecessary.

Illustration: Wolt's AI takes the place of CRM workers.

Address it: let people understand AI is a helping hand.

AI IN THE CASE OF THE EMPLOYEES



The following slide shows how does AI affect businesses regarding EMPLOYEES.

OPPORTUNITIES

REDUCTION OF HUMAN ERROR

With robots, the number of errors can be decreased.

Illustration: Wolt's chatbot follows the same algorithm.

Address it: use learning algorithms.

REDUCTION OF REPETITIVE TASKS

By this employees can focus on creative tasks.

Illustration: accountants' monotonous tasks.

Address it: service centers must introduce AI.

REDUCTION OF RISK OF FRAUD

Recognition of suspicious action.

Illustration: fraud in case of financial issues.

Address it: invest in security.

CHALLENGES

LACK OF KNOWLEDGE

Employees are not well trained.

Illustration: AI is hard to introduce in the case of an SME.

Address it: train people to get familiar with IT.

FEAR OF BEING UNNECESSARY

Employees fear that their job will become unnecessary.

Illustration: Wolt's AI takes the place of CRM workers.

Address it: let people understand AI is a helping hand.

ORGANIZATIONAL RESISTANCE

Organizational culture is against AI.

Illustration: Wolt's workers will resist the new technology.

Address it: show workers the positive effect of free time.

AI IN THE CASE OF THE SUPPLIERS



The following slide shows how does AI affect businesses regarding SUPPLIERS, as other stakeholders.

OPPORTUNITIES

CHALLENGES

AI IN THE CASE OF THE SUPPLIERS



The following slide shows how does AI affect businesses regarding SUPPLIERS, as other stakeholders.

OPPORTUNITIES

STOCK OPTIMIZATION

Automated forecasts can optimize the level of stocks.

Illustration: AI optimizes the stock based on demand.

Address it: invest in AI stock optimizer.

CHALLENGES

AI IN THE CASE OF THE SUPPLIERS



The following slide shows how does AI affect businesses regarding SUPPLIERS, as other stakeholders.

OPPORTUNITIES

STOCK OPTIMIZATION

Automated forecasts can optimize the level of stocks.

Illustration: AI optimizes the stock based on demand.

Address it: invest in AI stock optimizer.

PROCUREMENT AUTOMATIZATION

Reaching a certain stock level robotic procurement.

Illustration: AI softwares order based on demand.

Address it: invest in AI stock procurers.

CHALLENGES

AI IN THE CASE OF THE SUPPLIERS



The following slide shows how does AI affect businesses regarding SUPPLIERS, as other stakeholders.

OPPORTUNITIES

STOCK OPTIMIZATION

Automated forecasts can optimize the level of stocks.

Illustration: AI optimizes the stock based on demand.

Address it: invest in AI stock optimizer.

PROCUREMENT AUTOMATIZATION

Reaching a certain stock level robotic procurement.

Illustration: AI softwares order based on demand.

Address it: invest in AI stock procurers.

PAYMENT HANDLING

Paying on time, helping the whole supply chain.

Illustration: AI conducts automatic payments.

Address it: invest in AI payment handlers.

CHALLENGES

AI IN THE CASE OF THE SUPPLIERS



The following slide shows how does AI affect businesses regarding SUPPLIERS, as other stakeholders.

OPPORTUNITIES

STOCK OPTIMIZATION

Automated forecasts can optimize the level of stocks.

Illustration: AI optimizes the stock based on demand.

Address it: invest in AI stock optimizer.

PROCUREMENT AUTOMATIZATION

Reaching a certain stock level robotic procurement.

Illustration: AI softwares order based on demand.

Address it: invest in AI stock procurers.

PAYMENT HANDLING

Paying on time, helping the whole supply chain.

Illustration: AI conducts automatic payments.

Address it: invest in AI payment handlers.

CHALLENGES

DIFFERENCE OF SYSTEMS

Using more and more AI tools.

Illustration: AI tools operate based on a different logic.

Address it: integrate AI systems.

AI IN THE CASE OF THE SUPPLIERS



The following slide shows how does AI affect businesses regarding SUPPLIERS, as other stakeholders.

OPPORTUNITIES

STOCK OPTIMIZATION

Automated forecasts can optimize the level of stocks.

Illustration: AI optimizes the stock based on demand.

Address it: invest in AI stock optimizer.

PROCUREMENT AUTOMATIZATION

Reaching a certain stock level robotic procurement.

Illustration: AI softwares order based on demand.

Address it: invest in AI stock procurers.

PAYMENT HANDLING

Paying on time, helping the whole supply chain.

Illustration: AI conducts automatic payments.

Address it: invest in AI payment handlers.

CHALLENGES

DIFFERENCE OF SYSTEMS

Using more and more AI tools.

Illustration: AI tools operate based on a different logic.

Address it: integrate AI systems.

DIFFICULTY OF INTRODUCTION

It may cause problems in the implementation.

Illustration: cost reduction can be made by redundancies.

Address it: implement it step-by-step.

SUMMARY & STRUCTURE

01

**ANALYSIS: HOW DOES AI
AFFECT DIFFERENT AREAS?**

02

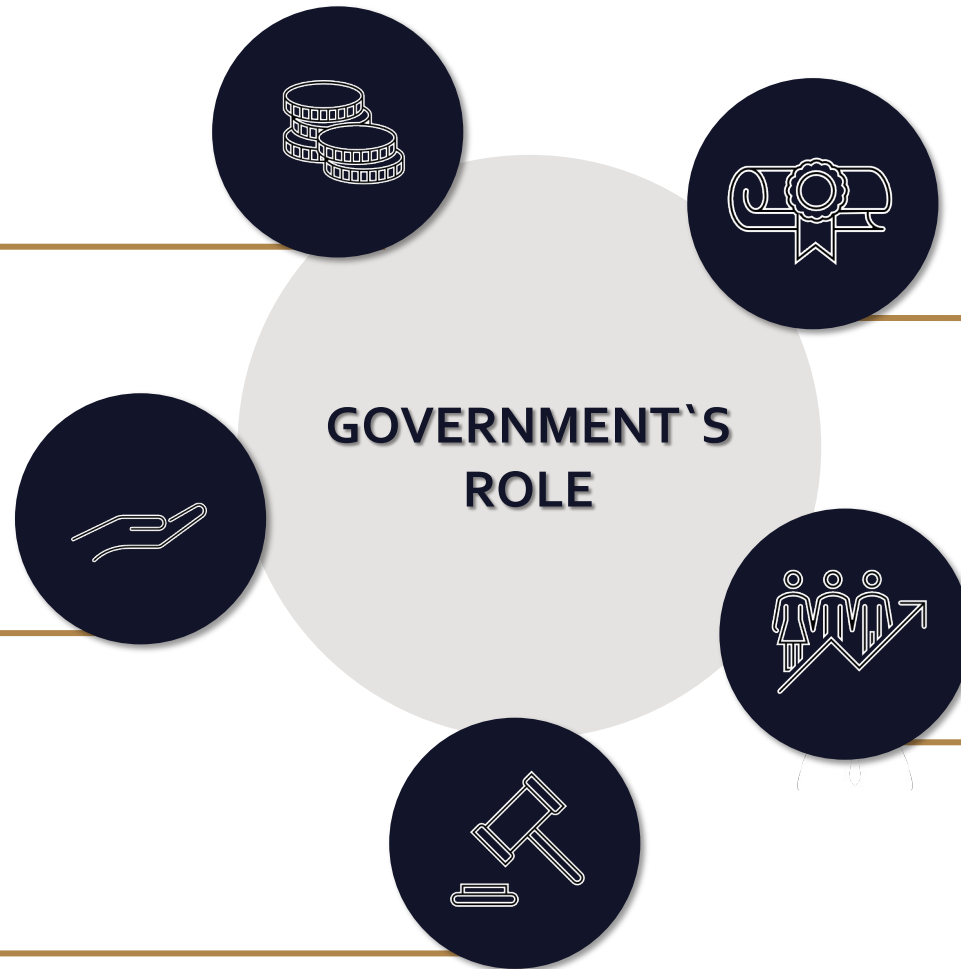
**3X3 OPPORTUNITIES
3X3 CHALLENGES**

03

**ETHICAL AND ECONOMICAL
IMPLICATIONS OF GOVERNMENT**

GOVERNMENT'S ROLE

The government should take a regulatory position in the context of AI.



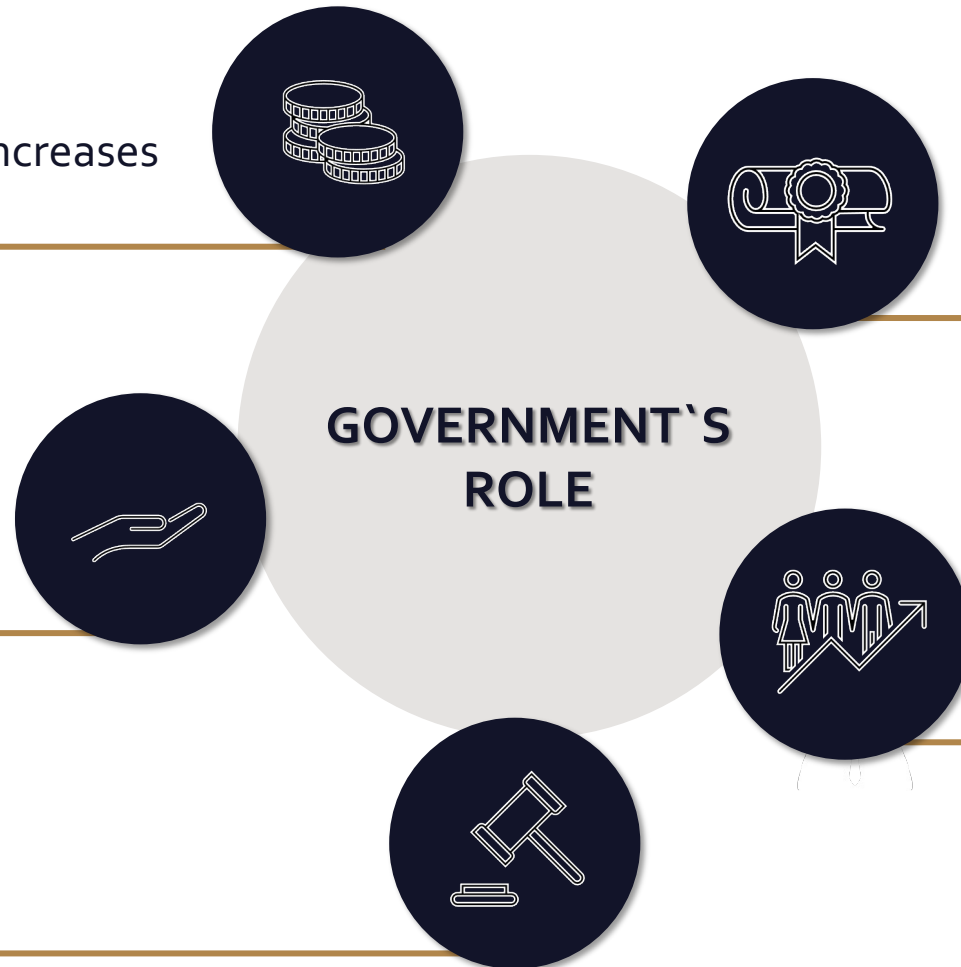
GOVERNMENT'S ROLE



The government should take a regulatory position in the context of AI.

1. Economic reason

Without any doubt AI increases economic efficiency



GOVERNMENT'S ROLE



The government should take a regulatory position in the context of AI.

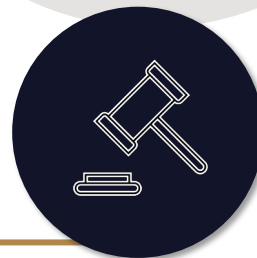
1. Economic reason

Without any doubt AI increases economic efficiency



2. Supportive

Government has to support the introduction of AI

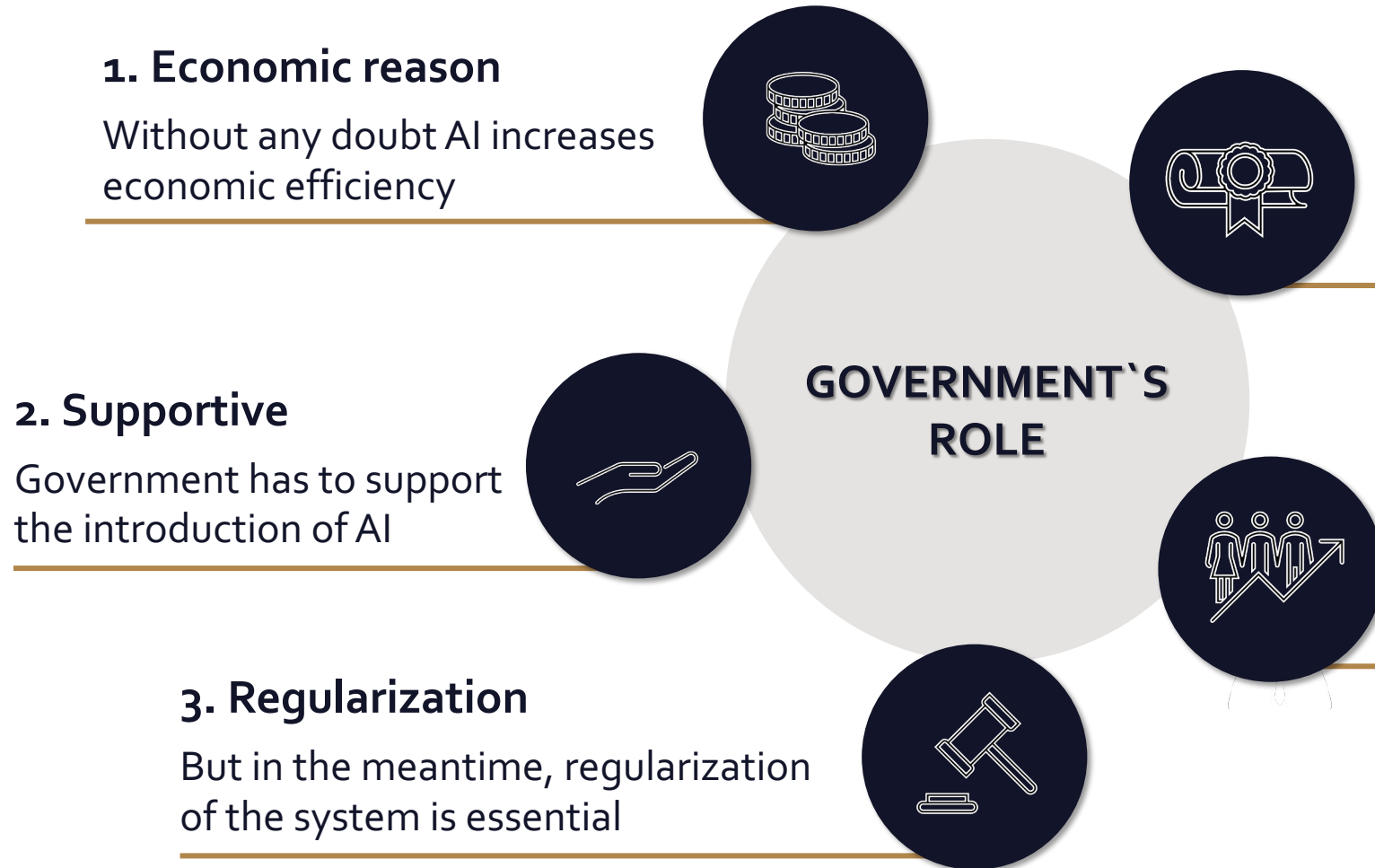


GOVERNMENT'S
ROLE

GOVERNMENT'S ROLE



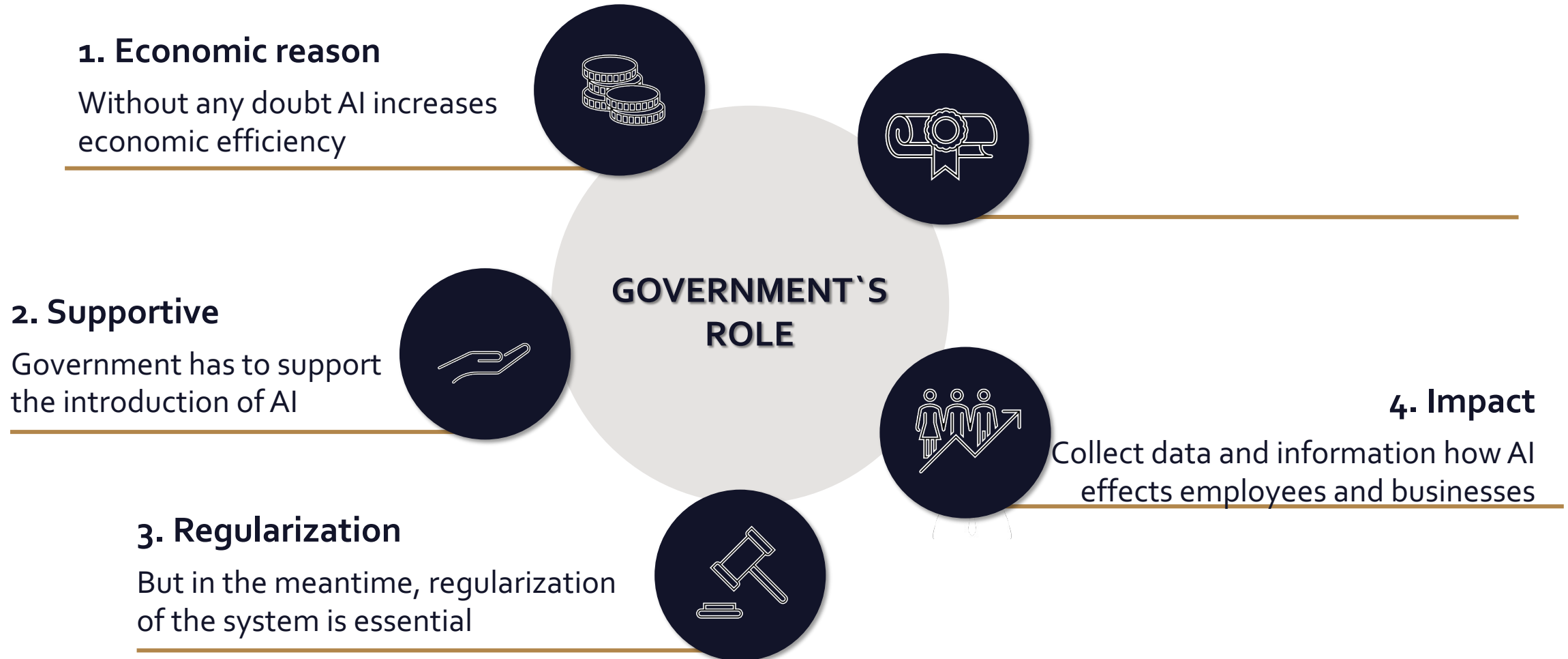
The government should take a regulatory position in the context of AI.



GOVERNMENT'S ROLE



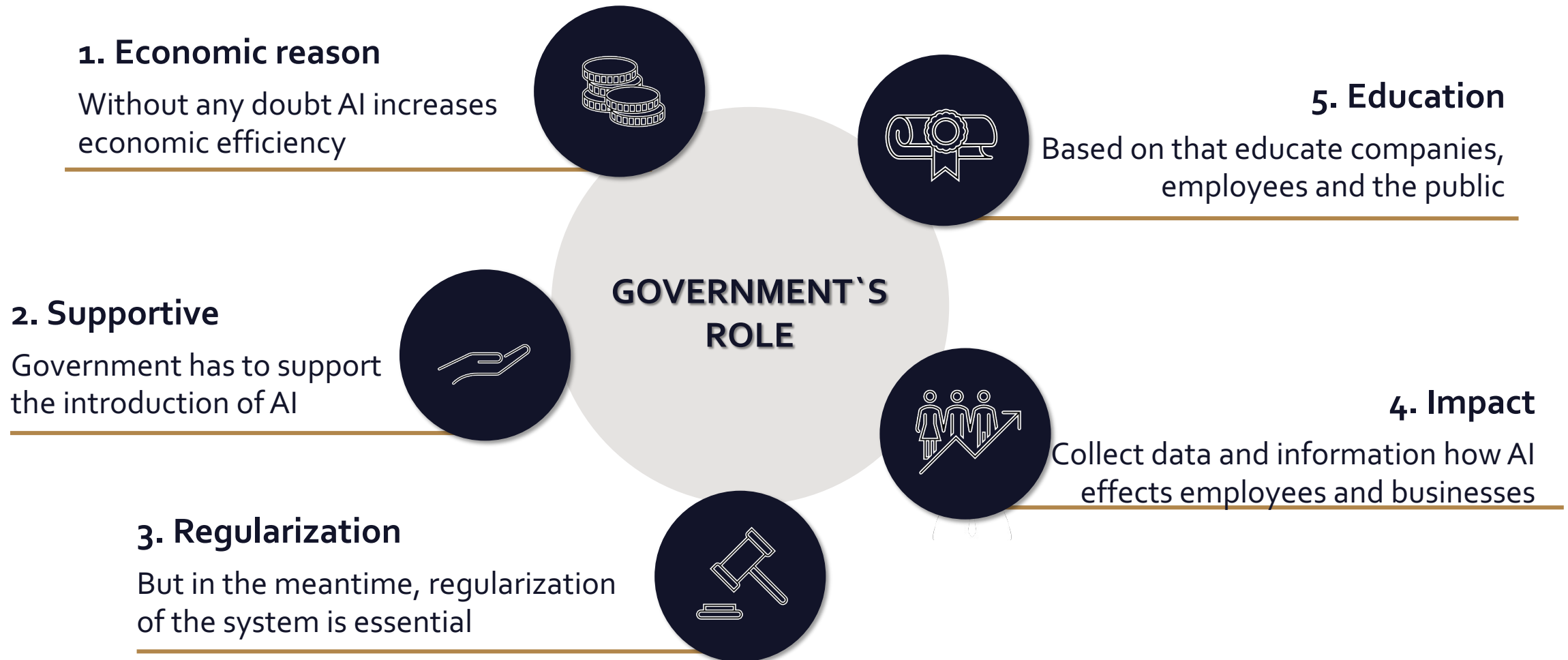
The government should take a regulatory position in the context of AI.



GOVERNMENT'S ROLE



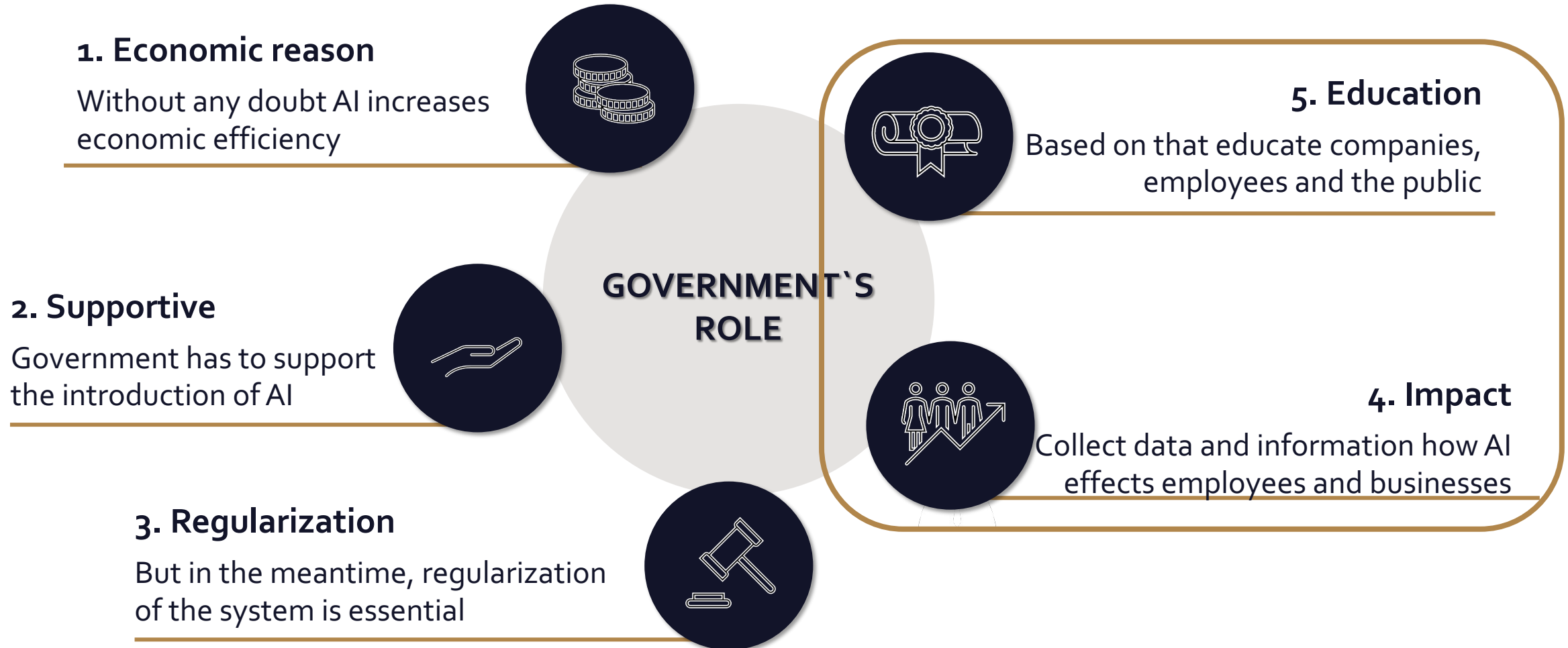
The government should take a regulatory position in the context of AI.



GOVERNMENT'S ROLE



The government should take a regulatory position in the context of AI.



IMPACT & EDUCATION



The following slide shows the concrete steps to be taken by the regulator.

IMPACT

- 1 Conduct surveys
- 2 Set up trial AIs monitored by the regulator
- 3 Collect the data at the choosen companies
- 4 Analysis of the collected data

IMPACT & EDUCATION



The following slide shows the concrete steps to be taken by the regulator.

IMPACT

- 1 Conduct surveys
- 2 Set up trial AIs monitored by the regulator
- 3 Collect the data at the choosen companies
- 4 Analysis of the collected data

EDUCATION

- 1 Draw attention on the risks of using AI
- 2 Introduction of new guidelines how to mitigate the risks
- 3 Reintegrate employees who lost their job because of AI
- 4 Monitoring of the effects of the guidelines

IMPACT & EDUCATION



The following slide shows the concrete steps to be taken by the regulator.

IMPACT

- 1 Conduct surveys
- 2 Set up trial AIs monitored by the regulator
- 3 Collect the data at the choosen companies
- 4 Analysis of the collected data

EDUCATION

- 1 Draw attention on the risks of using AI
- 2 Introduction of new guidelines how to mitigate the risks
- 3 Reintegrate employees who lost their job because of AI
- 4 Monitoring of the effects of the guidelines

We recommend that **governments support the introduction of AI** but within an appropriate educational and regulatory framework.

SUMMARY & STRUCTURE

01 ANALYSIS: HOW DOES AI
AFFECT DIFFERENT AREAS?

02 3X3 OPPORTUNITIES
3X3 CHALLENGES

03 ETHICAL AND ECONOMICAL
IMPLICATIONS OF GOVERNMENT

IS AI GOOD?

Yes, it is good, but with constant monitoring* and regulations**.

**the impact of AI on society*

***by the government*

THE POWER OF AI

HOW DOES AI AFFECT
BUSINESSES?

JOHN MOLSON MBA INTERNATIONAL CASE COMPETITION – CASE 3

2023